

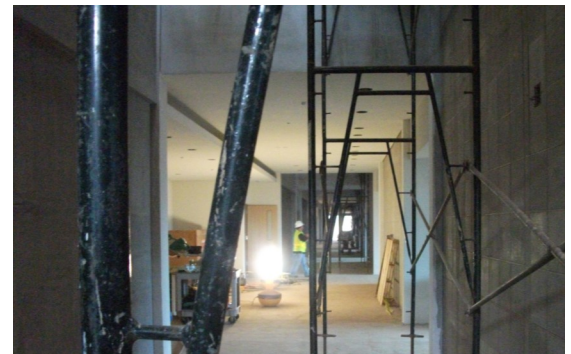
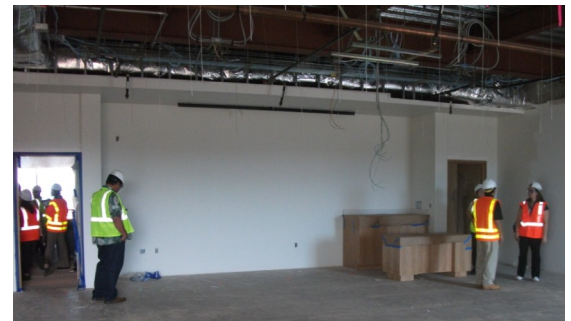


SENATOR WILL ESPERO  
Hawaii State Capitol  
415 S. Beretania Street Room 231  
Honolulu, HI 96813  
Tel: 586-6360 Fax: 586-6361  
Email: senespero@capitol.hawaii.gov  
SW November 2011



## *Visit to University of Hawaii West Oahu Construction Site*

Senators visited the construction site of the new campus of the UH-West Oahu. Phase I is set to open in fall 2012. It will include a classroom building and a 2.5 million gallon water tank that will serve the campus. The facility is expected to open its doors to its first students next fall. Leeward students will have a much shorter commute for their college education. The multi-phase project includes classroom and laboratory buildings, as well as housing for 7,500 students.



*The new Kapolei interchange was dedicated recently, providing better access between Kapolei city and the H-1.*

## *Hawaii Medical Center*

Senator Espero has been monitoring the HMC situation. He is in discussions with the state Department of Health, Governor's office, our Congressional delegation, and UH Medical School about options to save the facilities. The situation is serious. Efforts are being made to keep the emergency room open and transfer transplant operations.



The blessing and groundbreaking for Lualani Village was held on November 3. Across the Hawaii Prince Golf Course, the shopping center will be the largest in Ewa Beach. It is expected to open in fall 2012.

## Prompt Payment Task Force



Senator Espero is a member of the Prompt Payment Task Force formed by SCR 28. The task force will look into issues that delay prompt payments to non-profits and contractors doing business with the state.

## Justice Reinvestment

Senator Espero is a member of the Justice Reinvestment working group. Its goal is improving public safety through data-driven management of resources and results-based policies. The U.S. Department of Justice supports the Justice Reinvestment Initiative among the states. These efforts reduce spending on traditional incarceration and apply that savings into different strategies that increase community safety and hold offenders accountable. Methods our sister states now have in place include expanding substance abuse and mental health treatment programs; improved community supervision; graduated sanctions for probation and parole violations; and enhanced matching between rehabilitative programs and offenders. This approach looks to save hundreds of millions of dollars in corrections spending by reserving prison space for the most dangerous perpetrators and career criminals. He expects to introduce legislation from this working group.

## Ways and Means (WAM) Committee Site Visits

Each year WAM makes site visits to state facilities and state-funded projects to educate committee members and monitor state expenditures.

**Big Island** Hilo Courthouse (Hale Kaulike) \* Volcano School of Arts & Sciences \* Uchida Farms/Kalukalu Ranch Homestead \* Waimea School Cafeteria \* West Hawaii Explorations Academy/NELHA \* UH Hilo/PISCES \* Hawaii Community College \* Keakealani Building (Kona-District Court & Community Hospital) \* UH Center-West/Palamananui

**Kauai** Kauai County Council \* Mayor Bernard P. Carvalho, Jr. \* Kauai Visitor's Bureau \* Governor's Liaison Office \* Judiciary/Fifth Circuit Court Council for Native Hawaiian Advancement \* Kanuikapono Charter School \* Easter Seals/Kauai HCBS Program \* Garden Island Racing Association Garden Isle Healthcare & Rehabilitation Center \* Hawaii Hotel & Lodging Association \* Kauai Community College \* Kauai Economic Opportunity \* West Kauai Business & Professional Association \* Office of Economic Development \* Cattleman's Association \* Princeville Community Business Association \* Kauai Economic Development Board

**Maui** Maui Memorial Medical Center \* Lahainaluna & Kihei High Schools \* Puunene Prison site \* Maui Community Clinic \* UH-Maui College \* Maui Economic Development Board \* Health & Human Services organizations \* Hoapili Hale Courthouse

**Oahu** UHWO \* DOE/Kamehameha School \* Cancer Research Center \* Sheriff's office \* Nanakuli High/Intermediate School Tech Campus



Senators Solomon, Ige & Espero meet with Kona Community Hospital administrators.



UH President Greenwood & Senators at Cancer Research Center of Hawaii site.



Senators are briefed at Kauai Community College.